

Group of batteries	Catalog number	Box Type	Capacity [Ah]	Cold Cranking EN [A]	Voltage [V]	Dimensions (mm)	Layout (+/-)	Base Hold Down	Q-ty / pallet
--------------------	----------------	----------	---------------	----------------------	-------------	-----------------	--------------	----------------	---------------

Passenger vehicles Start/Stop - Advanced Glass Mat (AGM)

AGM DIN	550-275	AGM-L1	50	540	12	207x175x190	0	B13	100
AGM DIN	560-275	AGM-L2	60	680	12	242x175x190	0	B13	90
AGM DIN	570-375	AGM-L3	70	760	12	277x175x190	0	B13	80
AGM DIN	580-475	AGM-L4	80	800	12	315x175x190	0	B13	60
AGM DIN	595-575	AGM-L5	95	850	12	352x175x190	0	B13	60
AGM DIN	605-675	AGM-L6	105	950	12	394x175x190	0	B13	60

Passenger vehicles - European standard (DIN)

SMF DIN	540-002	LB1	40	380	12	207x175x175	0	B13	120
SMF DIN	545-002	L1	45	410	12	207x175x190	0	B13	120
SMF DIN	550-002	LB2	50	410	12	242x175x175	0	B13	108
SMF DIN	560-002	L2	55	480	12	242x175x190	0	B13	108
SMF DIN	560-004	L2	60	500	12	242x175x190	0	B13	108
SMF DIN	574-002	L3	66	590	12	278x175x190	0	B13	96
SMF DIN	574-001	L3	66	590	12	278x175x190	1	B13	96
SMF DIN	570-390	L3	74	620	12	278x175x190	0	B13	96
SMF DIN	570-391	L3	74	620	12	278x175x190	1	B13	96
SMF DIN	580-002	LB4	80	720	12	315x175x175	0	B13	72
SMF DIN	600-590L	L5	88	680	12	353x175x190	0	B13	72
SMF DIN	600-002	L5	100	800	12	353x175x190	0	B13	72

Passenger vehicles - Japanese standard (JIS)

SMF JIS	535-002	NS40	35	300	12	187x127x225	0	B00	116
SMF JIS	535-001	NS40	35	300	12	187x127x225	1	B00	116
SMF JIS	535-004	NS40	35	300	12	187x127x225	0	B01	116
SMF JIS	535-003	NS40	35	300	12	187x127x225	1	B01	116
SMF JIS	545-004	NS60	45	330	12	237x127x225	0	B00	96
SMF JIS	545-003	NS60	45	330	12	237x127x225	1	B00	96
SMF JIS	560-096	D23	60	480	12	230x170x224	0	B01	90
SMF JIS	560-095	D23	60	480	12	230x170x224	1	B01	90
SMF JIS	570-004	D26	70	570	12	261x175x225	0	B01	80
SMF JIS	570-003	D26	70	570	12	261x175x225	1	B01	80
SMF JIS	580-004	D31	80	750	12	296x175x227	0	B01	60
SMF JIS	580-003	D31	80	750	12	296x175x227	1	B01	60
SMF JIS	595-002	D31	95	800	12	296x175x227	0	B01	60
SMF JIS	595-001	D31	95	800	12	296x175x227	1	B01	60

Commercial vehicles - Accessible plugs (MF)

Heavy Duty MF	620-001	Type A	120	700	12	513x189x217	3	B00	35
Heavy Duty MF	620-002	Type A	120	700	12	513x189x217	4	B00	35
Heavy Duty MF	650-001	Type B	150	1000	12	513x189x217	3	B00	30
Heavy Duty MF	650-002	Type B	150	1000	12	513x189x217	4	B00	30
Heavy Duty MF	680-001	Type B	180	1000	12	513x189x217	3	B00	30
Heavy Duty MF	680-002	Type B	180	1000	12	513x189x217	4	B00	30
Heavy Duty MF	700-002	Type C	200	1100	12	513x276x236	3	B00	20
Heavy Duty MF	700-002_06	Type C	200	1100	12	513x276x236	4	B00	20
Heavy Duty MF	730-001	Type C	230	1200	12	513x276x236	3	B00	20

*** additional types available upon request ***



®

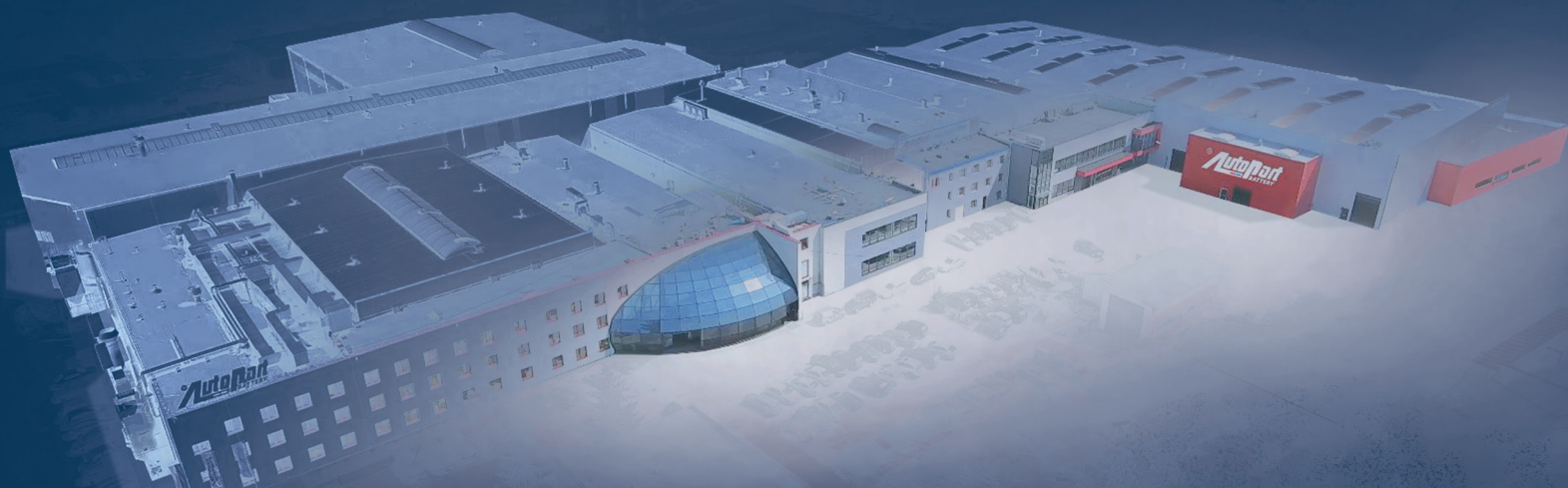
AutoPart

BATTERY

40

YEARS

AutoPart Battery was founded in 1982 and began as a small factory producing lead acid starter batteries for the domestic market in Poland. Today, after four decades of remarkable growth and investment, the company has become a leading European manufacturer with activities spanned across 4 continents and products distributed to over 50 countries around the world. The factory currently produces 2.5 million batteries in its state of the art 21.000 sq.m. manufacturing plant covering a wide range of battery needs for passenger, light & heavy commercial, agricultural, construction and leisure vehicles. The company is certified according to the highest standards for lead acid battery production and holds the IATF 16949 certificate set by the International Automotive Task Force. Furthermore, we have successfully implemented ISO 9001 and ISO 14001 systems for quality and environmental management respectively.



AWARDS / GRATIFICATION

fol. M. Pytko



Member of

® **AutoPart**
BATTERY

Pb8 Ltd. POLAND

39-300 Mielec
1 Sienkiewicza Str.
www.pb8.pl

tel.: +48 17 250 66 77
e-mail: pb8@pb8.pl